

新政

Model RA

魯子式流量計

POSITIVE DISPLACEMENT FLOW METER

■ 適用於高黏度，或具有腐蝕性液體

如汽油、柴油、重油、食用油、化學流體 ... 等



Standard specifications

Counter	7 digit or 8 digit, rate 5 digit
Accuracy:	0.5% (0.2% possible)
Max. Pressure:	10kg/cm ² or 20kg/cm ²
Max. Temperature:	180°C
Connection	JIS, DIN, ANSI

Flow Range : Accuracy $\pm 0.5\%$

Unit : m³/hour

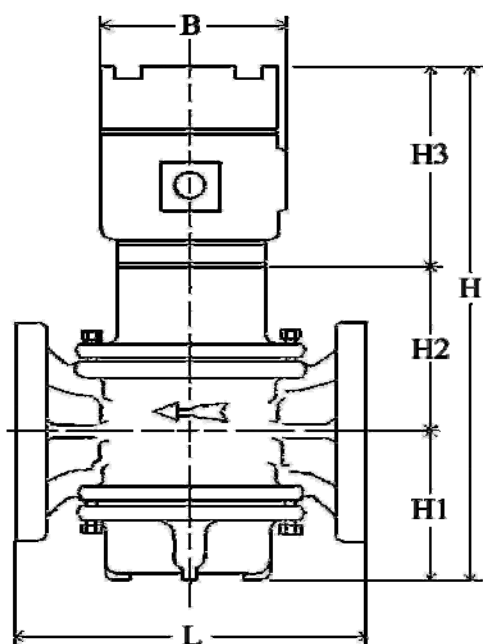
Capacity type Dia- meter Terms Note 1 Note 2				Fluid Viscosity	Petroleum							
					LPG	Gasoline	Kerosene	Light oil, grade-A heavy oi (high tem- perature)	Grade-A heavy oi	Grade-B heavy oil. Grade-C heavy oil. (high tem- perature)	Grade-C heavy oi	
				0.1cP~	0.5cP~	2cP~	5cP~	10cP~	50cP~	150cP~	500cP~	2000cP~
25 40	25 40	Normal	Continuous	-	1~4.5	0.8~4.5	0.4~6	0.1~6	0.05~6	0.025~6	0.013~4.5	0.007~3.5
			Intermittent	-	1~6	0.8~6	0.4~7	0.1~7	0.05~7	0.025~7	0.013~6	0.007~4.5
		Maximum		-	7	7	8	8	8	8	7	6
40 50	40 50	Normal	Continuous	-	2~9	1.5~9	0.8~13	0.25~13	0.1~13	0.05~13	0.02~9	0.01~7.5
			Intermittent	-	2~13	1.5~13	0.8~15	0.25~15	0.1~15	0.05~15	0.02~13	0.01~9
		Maximum		-	15	15	17	17	17	17	15	13
80	80	Normal	Continuous	6.5~17	5~17	3.5~25	1.8~25	0.6~35	0.3~35	0.15~35	0.07~20	0.03~17
			Intermittent	6.5~28	5~28	3.5~35	1.8~35	0.6~40	0.3~40	0.15~40	0.07~35	0.03~28
		Maximum		35	35	40	40	45	45	45	35	28
80L 100	80 100	Normal	Continuous	13~35	8~35	5~35	2.5~50	1~50	0.5~50	0.25~50	0.12~35	0.06~28
			Intermittent	13~50	8~50	5~50	2.5~55	1~55	0.5~55	0.25~55	0.12~50	0.06~35
		Maximum		55	55	55	60	60	60	60	55	50
100L	100	Normal	Continuous	25~85	16~85	12~85	8~120	4~120	2~120	0.7~120	0.35~85	0.17~60
			Intermittent	25~120	16~120	12~120	8~130	4~130	2~130	0.7~130	0.35~120	0.17~85
		Maximum		130	130	130	140	140	140	140	130	120

新政儀器有限公司

TEL:(02)26940177 (02)26949824 FAX:(02)26946663

www.hsinjeng.com.tw E-mail : hsin.jeng@msa.hinet.net

Basic Model	Size	Max. temp.	Mat'l	Display/output	Connection	Description
RA						
	25					1" (25mm)
	40					1-1/2" (40mm)
	50					2" (50mm)
	80					3" (80mm) 35 M3/Hr
	80L					3" (80mm) 50 M3/Hr
	100					4" (100mm) 50 M3/Hr
	100L					4" (100mm) 120 M3/Hr
	150L					6" (150mm) 250 M3/Hr
		-0				80 °C
		-1				120 °C
		-2				180 °C
			F			FC 25
			S			SUS316
				1		5 digit Flowrate/8 digit Totalizer
				2		Totalizer 8 Digit/ Reset 5 Digit
				3		Pulse output only
				4		5 digit Flowrate/8 digit Totalizer/Pulse
				5		5 digit Flowrate/8 digit Totalizer/4-20 mA
				+ 6	Explosion Proof - Class I, Division I, Groups B,C&D	
				7		
				J10		JIS 10K FF
				J20		JIS 20K FF
				A15		ANSI 150#FF
				A30		ANSI 300#FF
				P10		PN 10
				P16		PN 16
				P20		PN 20



Model	L	H	B	H1	H2	H3	weight (kg)
RA25	200	288	115	78	70	140	15
RA40	200	288	115	78	70	140	18
RA50	250	340	115	105	95	140	22
RA80	320	420	115	144	136	140	45
RA80L/RA100	320	420	115	144	136	140	49
RA100L	425	610					173
RA150L	425	760					280

新政儀器有限公司

TEL:(02)26940177 (02)26949824 FAX:(02)26946663
www.hsinjeng.com.tw E-mail : hsin.jeng@msa.hinet.net