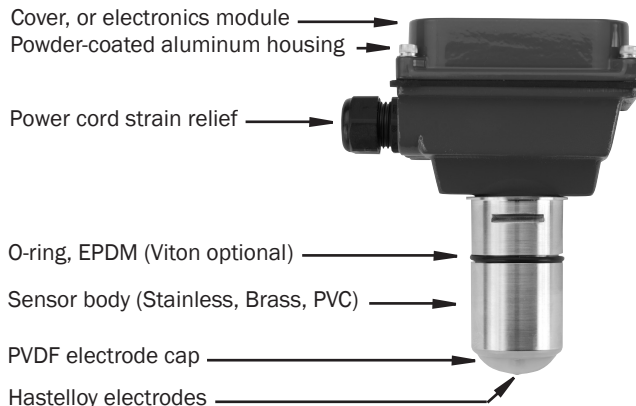
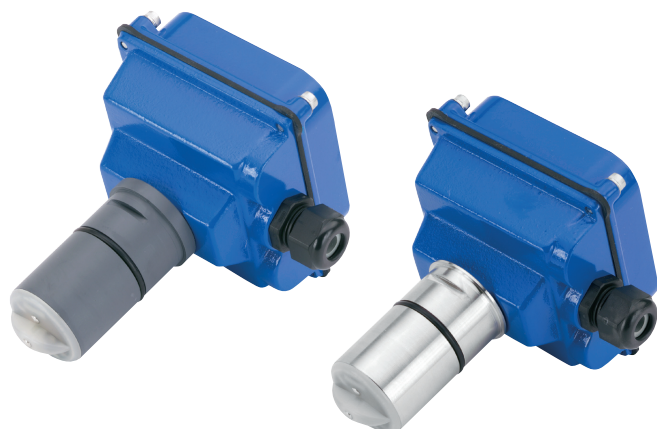


Insertion Eletromagnetic Flow Sensor



SPECIFICATIONS*

Pipe Size		1" to 12"
Materials	Mechanical	316 SS/Brass/PVC
	Electrodes	Hastelloy
	Housing	Cast powder-coated aluminum
	Electrode Cap	PVDF (Kynar)
	O-Ring	EPDM standard (Viton optional)
Power	Full Power	12 - 25 Vdc, 250 mA
	Low Power	12 - 25 Vdc, 40 mA average with 250 mA peaks
Flow Rate		0.28 - 20 ft/sec (0.08 - 6.09 m/sec)
Temperature	Ambient Temp	0° to 160° F (-17° to 72° C)
	Fluid Temp : Brass/SS	32° to 200° F (0° to 93° C)
	Fluid Temp: PVC	32° to 130° F (0° to 55° C) @ 0 psi
Pressure	Brass/SS	200 psi (13.8 bar)
	PVC	150 psi (10 bar) @ 75° F
Minimum Conductivity		20 microSiemens/cm
Calibration Accuracy		+/- 1% of full scale
Output		Square wave pulse, opto isolated, 550 Hz @ 20 ft/sec
Empty Pipe Detection		Software, defaults to zero flow
Regulatory		CE Mark (Stainless Steel, Brass and Standard Power Only)

*Specifications subject to change • Please consult our website for current data (www.seametrics.com).

FLOW RANGE (in GPM)

Nominal Pipe Size	1"	1-1/2"	2"	3"	4"	6"	8"	10"	12"
Min	.69	1.5	2.7	6.2	11	25	43	68	99
Max	49	110	196	440	783	1760	3130	4900	7050

新政儀器有限公司

TEL:(02)26940177 (02)26949824 FAX:(02)26946663

www.hsinjeng.com.tw E-mail : hsin.jeng@msa.hinet.net