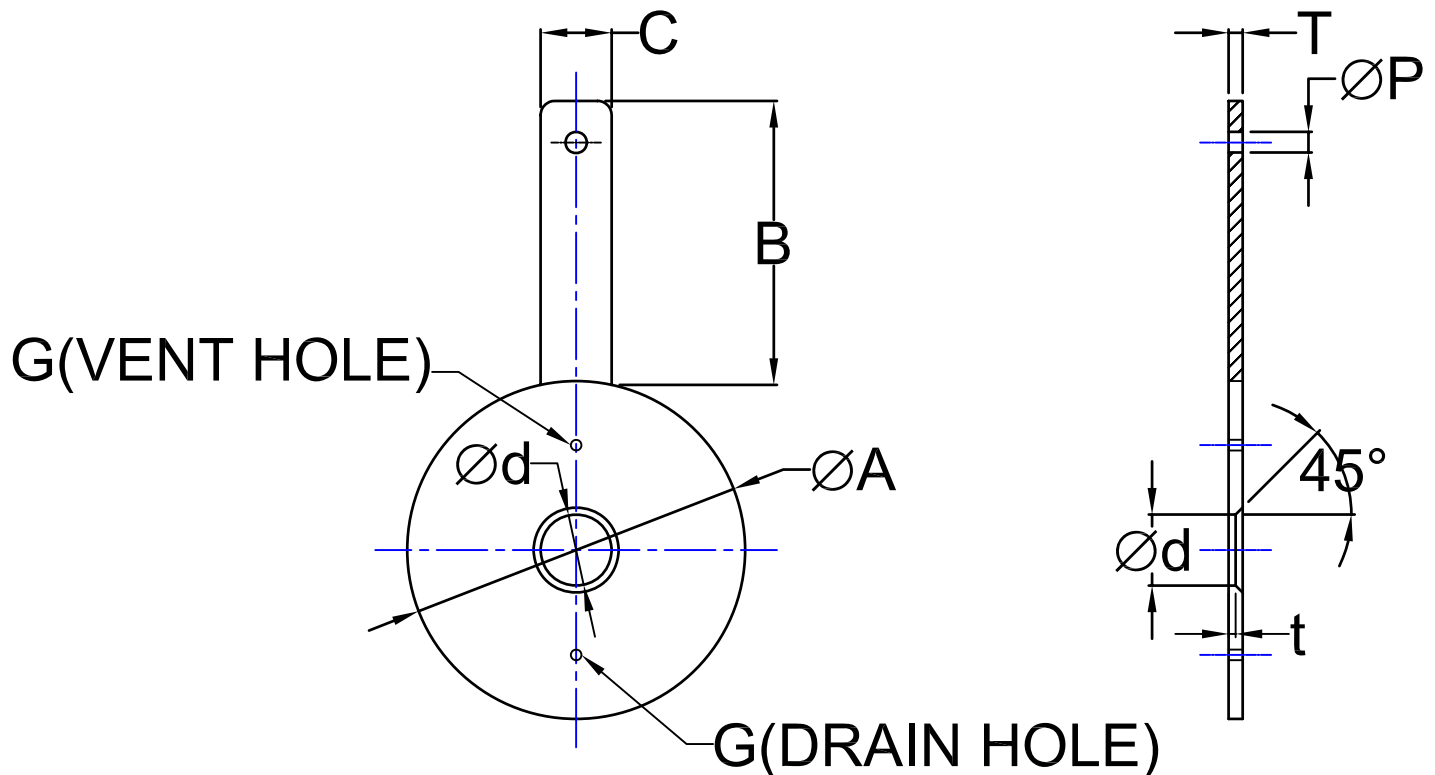


SHARP EDGED ORIFICE PLATE



LINE SIZE	125# & 150# ANSI	250# & 300# ANSI	600# ANSI	900# ANSI	1500# ANSI	2500# ANSI	FOR ALL PRESSURE RATINGS 125#-1500# ANSI			
	A	A	A	A	A	A	B	C	T	G
1/2"	47.63	53.98	53.98	63.50	63.50	69.85	100	25	3.18	1.0
3/4"	57.15	66.68	66.68	69.85	69.85	76.20	100	25	3.18	1.0
1"	66.68	73.03	73.03	79.38	79.38	85.73	100	25	3.18	1.0
1 1/2"	85.73	95.25	95.25	98.43	98.43	117.48	100	25	3.18	1.6
2"	104.78	111.13	111.13	142.88	142.88	146.05	100	25	3.18	1.6
3"	136.53	149.23	149.23	168.28	174.63	196.85	100	32	3.18	1.6
4"	174.63	180.98	193.68	206.38	209.55	234.95	100	32	3.18	1.6
6"	222.25	250.83	266.70	288.93	282.58	317.50	130	38	3.18	1.6
8"	279.40	307.98	320.68	358.78	352.43	387.35	130	38	3.18	1.6
10"	339.73	361.95	400.05	434.98	434.98	476.25	150	38	3.18	2.0
12"	409.58	422.28	457.20	498.48	520.70	549.28	150	38	3.18	2.5
14"	450.85	485.78	492.13	520.70	577.85	-	150	38	6.35	2.5
16"	514.35	539.75	565.15	574.68	641.35	-	150	38	6.35	3.0
18"	546.10	593.73	609.60	635.00	701.68	-	150	38	6.35	3.0
20"	603.25	650.88	679.45	695.33	752.48	-	150	38	6.35	3.0
22"	660.40	740.85	733.43	-	-	-	150	38	6.35	3.0
24"	714.38	771.53	787.40	835.03	901.70	-	150	38	6.35	3.0
30"	879.48	949.33	968.38	-	-	-	150	38	6.35	3.0
36"	1044.58	1114.43	1127.13	-	-	-	150	38	6.35	3.0

Nota:1.All dimensions are in millimeters unless otherwise noted.

2.When edge thickness (t) is less than plate thickness (T), bevel is as shown.

名稱

流孔板

型式

編號

11-01-02.1-2

日期

98.7.24

單位

m/m



新政儀器有限公司 台北縣汐止市福德一路392巷41弄17號 TEL:(02)26940177 FAX:(02)26946663
網址:www.hsinjeng.com.tw E-mail:hsin.jeng@msa.hinet.net