

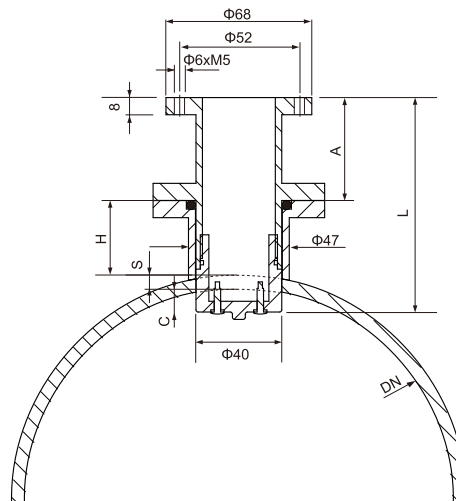
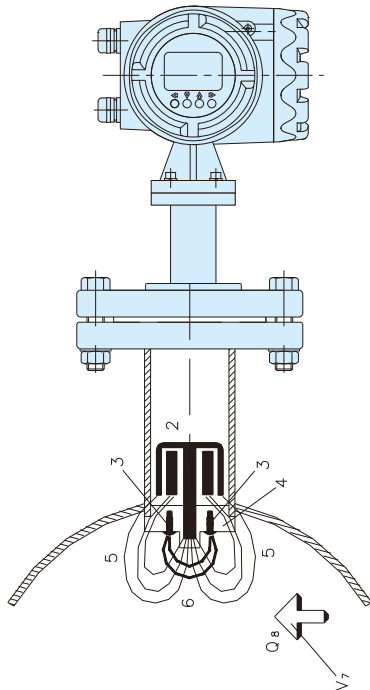
新政

Model EF-HA

插入型電磁式流量計

Performance Feature

Diameter:	DN50mm-DN2000mm
Electrodes:	316L,Hb,Hc
Liner:	PTFE
Medium:	conductivity liquids
Medium conductivity:	$\geq 20\mu$ s/cm
Accuracy:	$\pm 2\%$ RS
Velocity of flow:	0.3m/s-10m/s
Converter optional is	MF710/720/730(remote)/MF740/MF750
Measure direction:	forward/reverse
Environment temp.:	-25℃ -60℃ , relative humidity 90%
Working pressure:	0.6MPa-1.6MPa
Working temperature:	-25℃-80℃
Power supply:	85~265VAC(50HZ or 60HZ),24VDC
Installation:	compact,remote



新政儀器有限公司

TEL:(02)26940177 (02)26949824 FAX:(02)26946663

www.hsinjeng.com.tw E-mail : hsin.jeng@msa.hinet.net