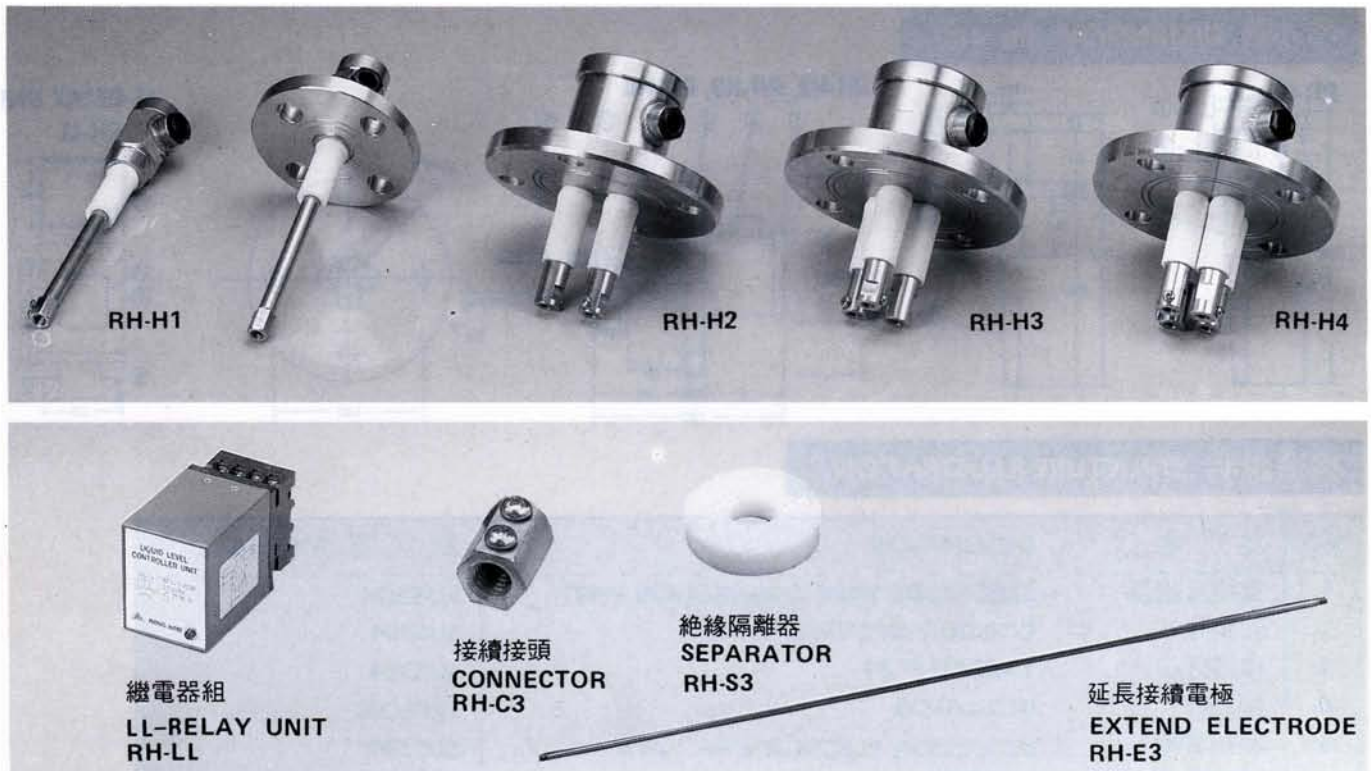


新政

Model H-TYPE

高溫高壓電極液位計



用途 APPLICATION

1. 純水、蒸餾水、自來水、污水、廢水等之液位控制。
2. 各種水溶液之液位控制(只要有水分即可)。

1. Liquid level control for PURE WATER, DISTILLED WATER, WATER SUPPLY, POLLUTED WATER, WASTE WATER, etc.
2. Liquid level control for all kinds of solution. (with water contained)

按裝方式 INSTALLATION TYPE

桶側 Side of Tank: RH-H1

桶頂 Top of Tank: RH-H1, H2, H3, H4

電極部與繼電器組配合表 SENSOR VS. LL-RELAY UNIT FUNCTION CHART

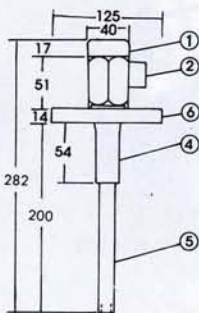
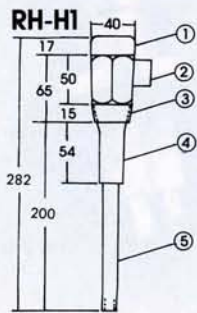
| 電極型號 SENSOR MODEL | 桶槽材質 MATERIAL OF TANK | 繼電器組數目 NO. OF RELAY UNIT | 電極作用 ELECTRODE FUNCTION | 接點輸出 OUTPUT |
|----------------------|--------------------------|-----------------------------|---|--------------------------|
| RH-H1 | — | 1 | 上限或下限 HIGH or LOW | 1C |
| RH-H2 | 金屬 METAL | 1 | 上下限 HIGH-LOW | 1C |
| | | 2 | 上限及下限 HIGH & LOW | 1C × 2 |
| RH-H3 | 非金屬 NON-METAL | 1 | 上限或下限 HIGH or LOW | 1C |
| | 金屬 METAL | 2 | 上下限 HIGH-LOW 異常上限或異常下限 HIGH-HIGH or LOW-LOW 1 & 2 & 3 | 1C 1C × 3 |
| RH-H4 | 非金屬 NON-METAL | 1 | 上下限 HIGH-LOW | 1C |
| | | 2 | 上限及下限 HIGH & LOW | 1C × 2 |
| | 金屬 METAL | 2 | 上下限 HIGH-LOW × 2ST | 1C × 2 |
| | | 3 | 異常上限 HIGH-HIGH 上下限 HIGH-LOW 異常下限 LOW-LOW 1 & 2 & 3 & 4 | 1C 1C 1C 1C × 4 |
| | 非金屬 NON-METAL | 2 | 上下限 HIGH-LOW 異常上限或異常下限 HIGH-HIGH or LOW-LOW 1 & 2 & 3, E | 1C 1C × 3 |
| | | 3 | | |
| | | | | |
| | | | | |

新政儀器有限公司

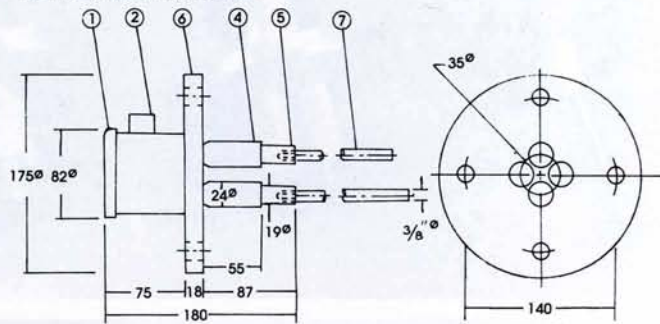
TEL:(02)26940177 (02)26949824 FAX:(02)26946663

www.hsinjeng.com.tw E-mail : hsin.jeng@msa.hinet.net

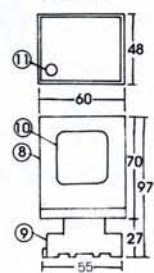
尺寸圖 DIMENSION (in mm)



RH-H2, RH-H3, RH-H4



LL-RELAY UNIT
RH-LL



構造說明 STRUCTURE ILLUSTRATION

| NO. | 品 名 | DESCRIPTION | 材 質 MATERIAL |
|-----|---------|--------------------------------|--------------|
| 1. | 電極接線部 | ELECTRODE WIRE CONNECTION PART | SUS304 |
| 2. | 配線孔 | CONDUIT OPENING 1/2" PF | SUS304 |
| 3. | 接續牙口 | THREAD 1" PT | SUS304 |
| 4. | 絕緣體 | INSULATOR | TEFLON |
| 5. | 感知電極 | INDUCTION ELECTRODE 3/8" W16 | SUS304 |
| 6. | 接續法蘭 | FLANGE | SUS304 |
| 7. | 延長接續電極 | EXTEND ELECTRODE 3/8" Ø | SUS304 |
| 8. | 繼電器組本體 | MAIN BODY of RELAY UNIT | |
| 9. | 繼電器組固定座 | RELAY UNIT FIXED STAND | P.C.FIBER |
| 10. | 接線圖 | WIRING ILLUSTRATION | |
| 11. | 檢出指示燈 | INDUCTION INDICATOR LAMP | LED |

規格 SPECIFICATION

型號 MODEL: RH-H1, RH-H2, RH-H3, RH-H4, RH-LL, RH-C3, RH-E3, RH-S3

| | | |
|----------|--------------------|--|
| 1. 檢測方式 | MEASURING SYSTEM | 電極感應式 ELECTRODE-INDUCTION TYPE |
| 2. 電極結構 | CONSTRUCTION | 高溫高壓型 HIGH TEMPERATURE, PRESSURE-RESISTANT TYPE |
| 3. 動作感度 | SENSITIVITY | 0~300KΩ (STANDARD) |
| 4. 電極材質 | SENSOR MATERIAL | SUS304 (or SUS316) |
| 5. 絕緣材質 | INSULATOR MATERIAL | TEFLON |
| 6. 電極耐溫 | TEMPERATURE | 200°C Max. |
| 7. 電極耐壓 | PRESSURE | 10 kg/cm² Max. |
| 8. 電氣接口 | CONDUIT CONNECTION | 1/2" PF |
| 9. 接續方式 | SENSOR MOUNTING | H1: 接續牙口 THREAD: 1" PT 接續法蘭 FLANGE: 1"×10K JIS H2,3,4: 接續法蘭 FLANGE: 2 1/2"×10K JIS 延長接續電極 EXTEND ELECTRODE 3/8" Ø 可接長 EXTENSIBLE |
| 10. 電極外徑 | ELECTRODE DIAMETER | |
| 11. 電極長度 | SENSOR LENGTH | |
| 12. 控制輸出 | CONTROL OUTPUT | 1C(1a1b) 250V 2A × N (with N pc LL-Relay unit) |
| 13. 使用電源 | POWER SUPPLY | AC 110/220V × 50/60Hz 1Ø |
| 14. 電力消耗 | POWER CONSUMPTION | 4VA |

使用方法 USAGE

1. 安裝完成，線路檢查確實無誤後，方可輸入電源。
2. 用一手觸摸法蘭或牙口，同時以另一手觸摸感知電極，則會有控制信號輸出，若無控制信號輸出，則須再檢查線路是否有誤。
3. 桶槽內液面接觸到最短電極尚未有動作時，則須再檢查線路是否有誤。

1. When installation is completed, make sure the wiring is correct before feeding the power.
2. Use one hand to touch FLANGE or THREAD while the other hand is touching the induction electrode, there should be control signal comes out, if not, recheck the wiring.

3. If the liquid inside the tank reaches the shortest electrode of sensor and no response is made, check the wiring again.

※ 當感知電極需要接長時，應注意：須先將感知電極固定，再將接長部(延續部)旋緊，切勿使感知電極扭動。

* If longer induction part is required, first fix the original induction electrode, then screw the extended part tightly. Don't let loose any induction part.

新政儀器有限公司

TEL:(02)26940177 (02)26949824 FAX:(02)26946663

www.hsinjeng.com.tw E-mail : hsin.jeng@msa.hinet.net