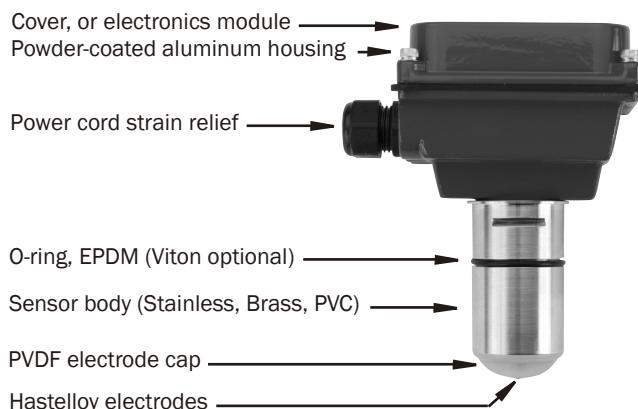
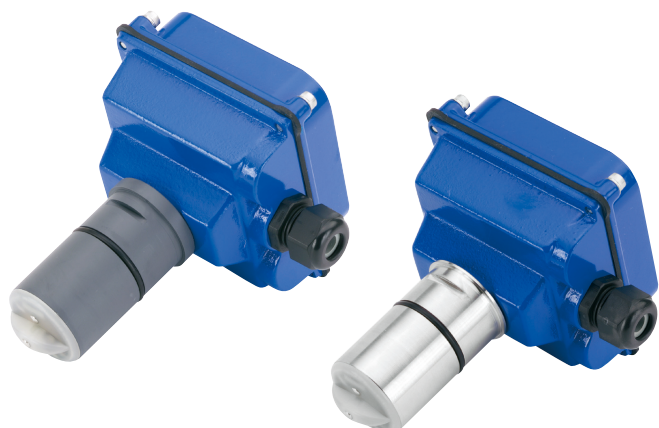


## Insertion Electromagnetic Flow Sensor



### SPECIFICATIONS\*

|                             |                              |  |
|-----------------------------|------------------------------|--|
| <b>Pipe Size</b>            |                              | 1" to 12"  |
| <b>Materials</b>            | <b>Mechanical</b>            | 316 SS/Brass/PVC   |
|                             | <b>Electrodes</b>            | Hastelloy  |
|                             | <b>Housing</b>               | Cast powder-coated aluminum                              |
|                             | <b>Electrode Cap</b>         | PVDF (Kynar)   |
|                             | <b>O-Ring</b>                | EPDM standard (Viton optional)                           |
| <b>Power</b>                | <b>Full Power</b>            | 12 - 25 Vdc, 250 mA                                      |
|                             | <b>Low Power</b>             | 12 - 25 Vdc, 40 mA average with 250 mA peaks             |
| <b>Flow Rate</b>            |                              | 0.28 - 20 ft/sec (0.08 - 6.09 m/sec)                     |
| <b>Temperature</b>          | <b>Ambient Temp</b>          | 0° to 160° F (-17° to 72° C)                             |
|                             | <b>Fluid Temp : Brass/SS</b> | 32° to 200° F (0° to 93° C)                              |
|                             | <b>Fluid Temp: PVC</b>       | 32° to 130° F (0° to 55° C) @ 0 psi                      |
| <b>Pressure</b>             | <b>Brass/SS</b>              | 200 psi (13.8 bar)                                       |
|                             | <b>PVC</b>                   | 150 psi (10 bar) @ 75° F                                 |
| <b>Minimum Conductivity</b> |                              | 20 microSiemens/cm                                       |
| <b>Calibration Accuracy</b> |                              | +/- 1% of full scale                                     |
| <b>Output</b>               |                              | Square wave pulse, opto isolated, 550 Hz @ 20 ft/sec     |
| <b>Empty Pipe Detection</b> |                              | Software, defaults to zero flow                          |
| <b>Regulatory</b>           |                              | CE Mark (Stainless Steel, Brass and Standard Power Only) |

\*Specifications subject to change • Please consult our website for current data ([www.seametrics.com](http://www.seametrics.com)).

### FLOW RANGE (in GPM)

| Nominal Pipe Size | 1"  | 1-1/2" | 2"  | 3"  | 4"  | 6"   | 8"   | 10"  | 12"  |
|-------------------|-----|--------|-----|-----|-----|------|------|------|------|
| Min               | .69 | 1.5    | 2.7 | 6.2 | 11  | 25   | 43   | 68   | 99   |
| Max               | 49  | 110    | 196 | 440 | 783 | 1760 | 3130 | 4900 | 7050 |